

ADVICON MÜNCHEN GRUNDRISS

18, Odeonsplatz, 80539 Munich, Bavaria, Germany
TOTAL AREA: 251.29 m² • LIVING AREA: 251.29 m² • FLOORS: 1 • ROOMS: 12



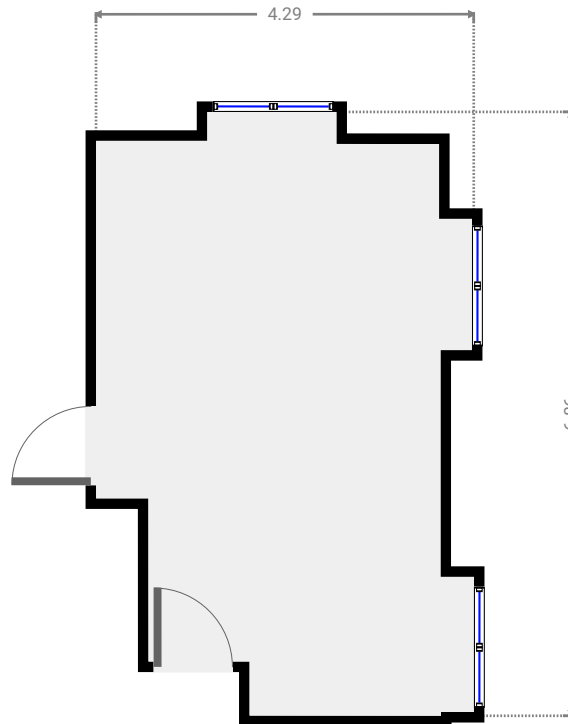
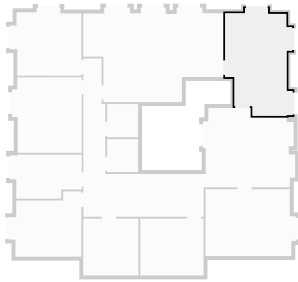
▼ Ground Floor

TOTAL AREA: 251.29 m² • LIVING AREA: 251.29 m² • ROOMS: 12



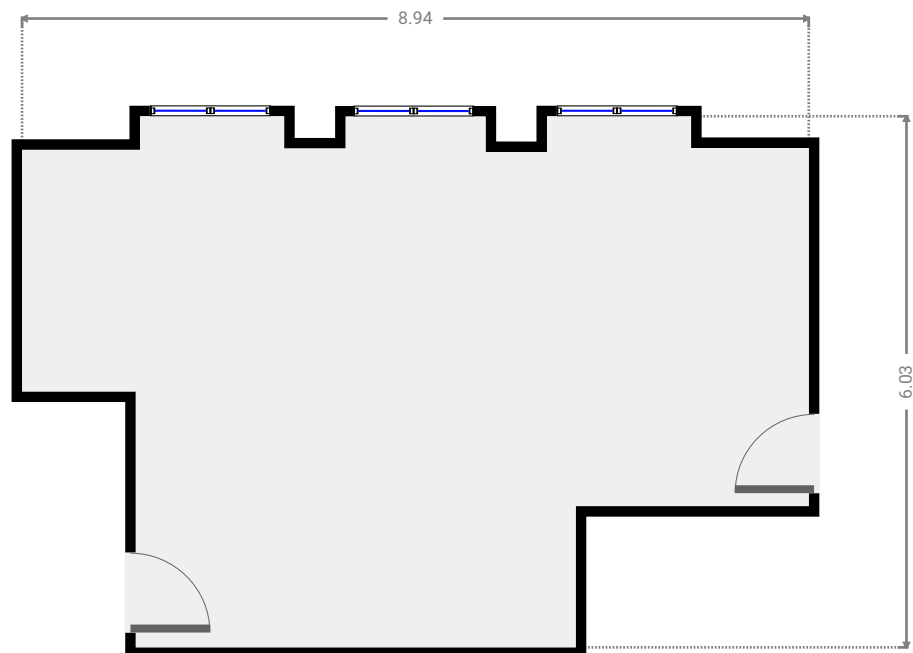
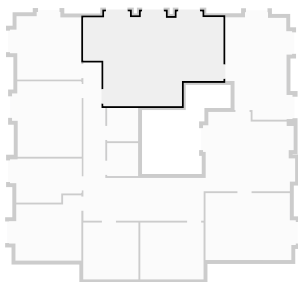
▼ Meeting 2 Ground Floor

WIDTH: 4.29 m • LENGTH: 6.86 m • CEILING HEIGHT: 2.81 m
AREA: 24.90 m² • PERIMETER: 23.01 m



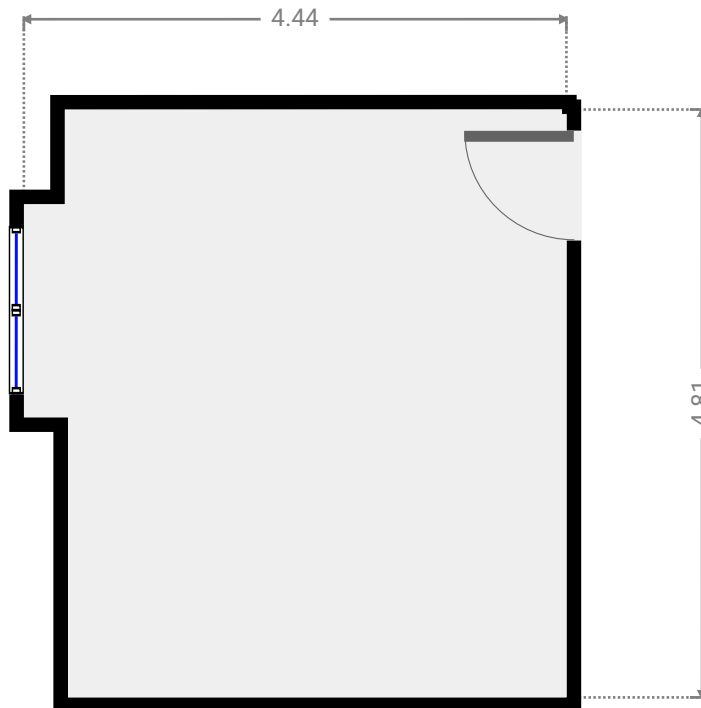
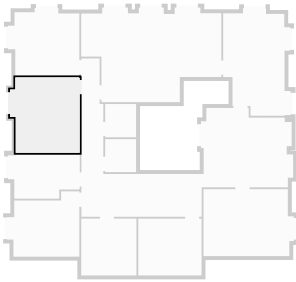
▼ Meeting 1 Ground Floor

WIDTH: 8.94 m • LENGTH: 6.03 m • CEILING HEIGHT: 2.98 m
AREA: 44.36 m² • PERIMETER: 31.47 m



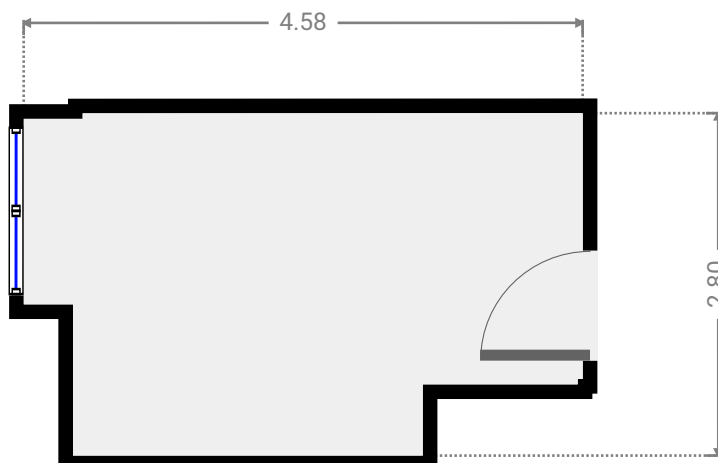
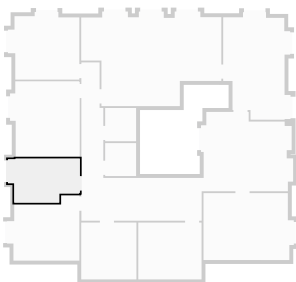
▼ Private Office Ground Floor

WIDTH: 4.44 m • LENGTH: 4.81 m • CEILING HEIGHT: 3.11 m
AREA: 20.29 m² • PERIMETER: 18.51 m



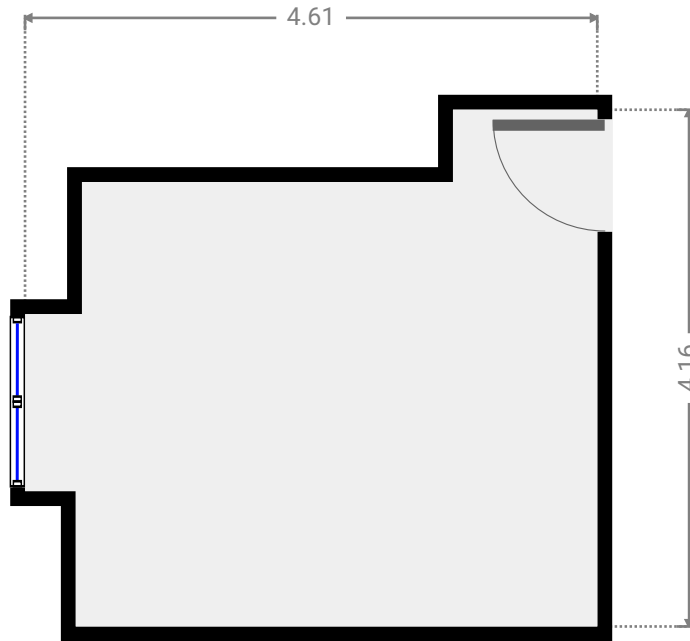
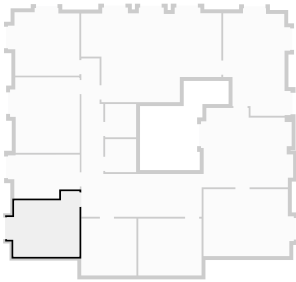
▼ Meeting 3 Ground Floor

WIDTH: 4.58 m • LENGTH: 2.80 m • CEILING HEIGHT: 2.91 m
AREA: 11.54 m² • PERIMETER: 14.76 m



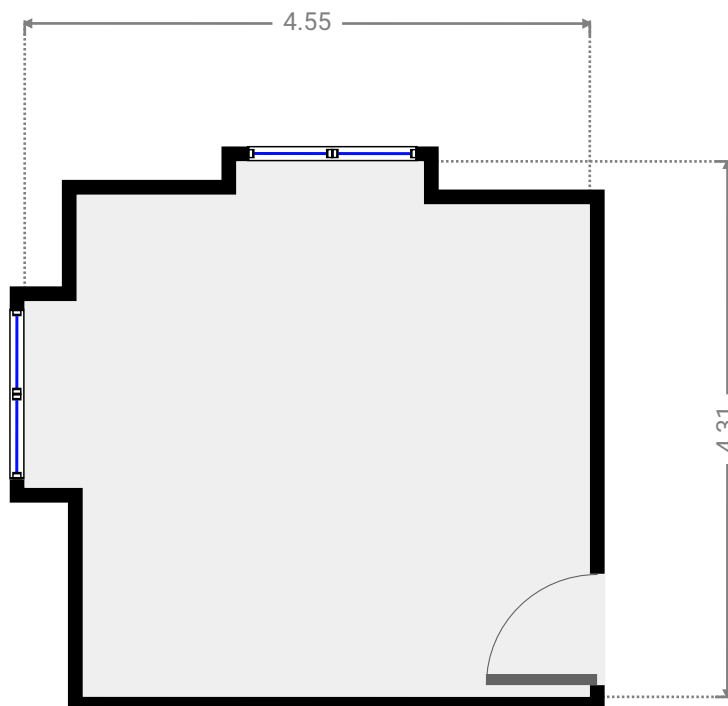
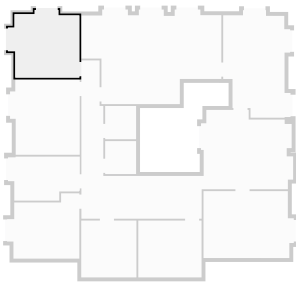
▼ Private Office Ground Floor

WIDTH: 4.61 m • LENGTH: 4.16 m • CEILING HEIGHT: 2.74 m
AREA: 16.25 m² • PERIMETER: 17.55 m



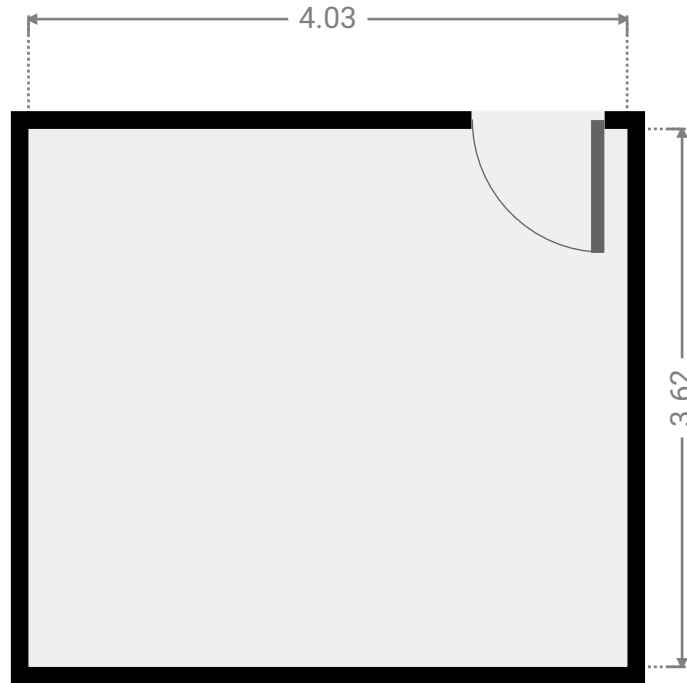
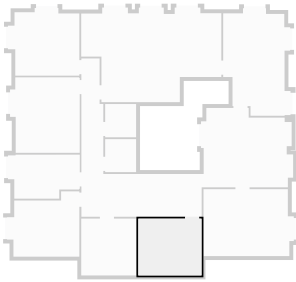
▼ Private Office Ground Floor

WIDTH: 4.55 m • LENGTH: 4.31 m • CEILING HEIGHT: 2.83 m
AREA: 17.56 m² • PERIMETER: 17.73 m



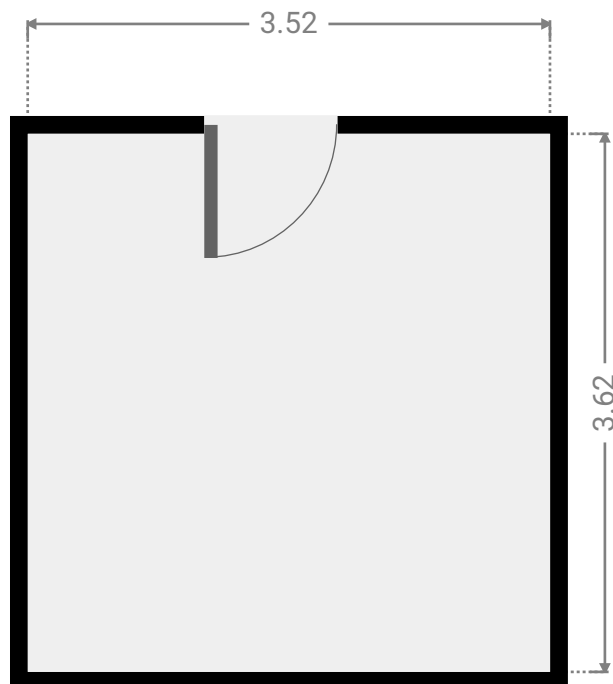
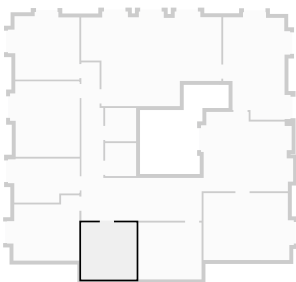
▼ Storage Ground Floor

WIDTH: 4.03 m • LENGTH: 3.62 m • CEILING HEIGHT: 2.70 m
AREA: 14.61 m² • PERIMETER: 15.31 m



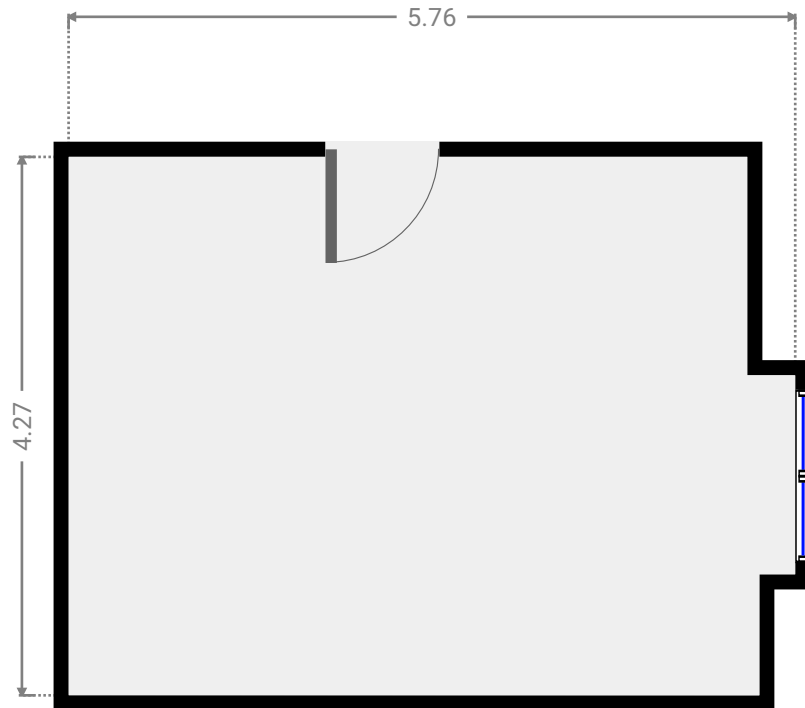
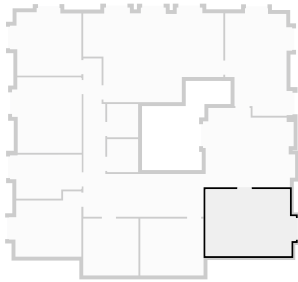
▼ Kitchen Ground Floor

WIDTH: 3.52 m • LENGTH: 3.62 m • CEILING HEIGHT: 2.98 m
AREA: 12.75 m² • PERIMETER: 14.28 m



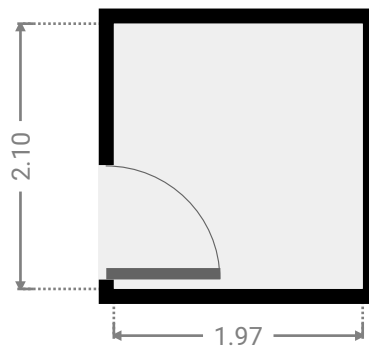
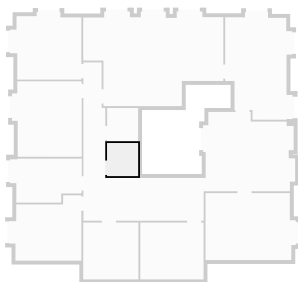
▼ Private Office Ground Floor

WIDTH: 5.76 m • LENGTH: 4.27 m • CEILING HEIGHT: 2.92 m
AREA: 23.63 m² • PERIMETER: 20.05 m



▼ Toiletten H Ground Floor

WIDTH: 1.97 m • LENGTH: 2.10 m
AREA: 4.14 m² • PERIMETER: 8.15 m



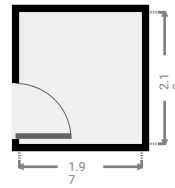
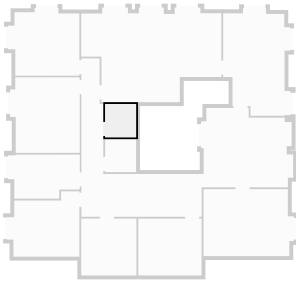
ADVICON MÜNCHEN GRUNDRISS

18, Odeonsplatz, 80539 Munich, Bavaria, Germany
TOTAL AREA: 251.29 m² • LIVING AREA: 251.29 m² • FLOORS: 1 • ROOMS: 12



▼ Toiletten D Ground Floor

WIDTH: 1.97 m • LENGTH: 2.12 m
AREA: 4.18 m² • PERIMETER: 8.18 m



▼ Open Space Ground Floor

WIDTH: 13.51 m • LENGTH: 10.09 m • CEILING HEIGHT: 3.52 m
AREA: 57.16 m² • PERIMETER: 56.59 m

